

NEW

EX350LC *PRIME*

SPEND LESS. EARN MORE.

Experience The Prime Advantage





- LED lights **NEW**
- FOPS level 2
- 360° visibility (optional)



- 7" TFT LCD monitor with on-board maintenance and diagnostic system **NEW**
- Integrated rear view camera
- Auto shutdown feature



- 4G telematics system **NEW**
- Daily SMS
- App and web based monitoring
- Real-time fuel consumption monitoring



- Engine protection control **NEW**
- Battery Cut-off switch
- Option of swing and travel alarms
- Beacon lights
- CLS, AFDSS and other safety features



- Smoother pilot levers **NEW**
- Comfortable and roomy cabin
- Weight adjustable suspension seat with air lumbar support
- Seat belt, fan and air conditioning
- Bluetooth music system



- Hydraulic regeneration
- Rock breaker piping kit (optional)
- Hydraulic flow combination for attachment
- Swing priority function
- Power boost



- Sturdier front attachment
- 3-piece boom



- Wide range of bucket options



- Cyclonic pre-cleaner
- Dust proof indoor net
- 4 power mode
- All remote-mounted filters for easier serviceability



- Predictive load response system
- All-new high efficiency hydraulic pump
- New-generation control valve
- Electro-hydraulic positive control system



- HD undercarriage
- 600 mm GP and HD track shoe options available
- Dual travel speed

SPECIFICATIONS

ENGINE

Model	QSB 6.7
Type	In-line, 6 cylinder, 4 cycle electronic engine
Aspiration	Turbocharged, charged air cooled
No. of cylinders	6
Rated power ISO 9249 / SAEJ1349, net	260 HP @ 2200 rpm
Max.torque	1100 Nm @ 1300 rpm
Piston displacement	6.702 L
Batteries	2x12V

HYDRAULIC SYSTEM

Main pumps	2 variable displacements axial piston pumps
Maximum oil flow	2x273 L/min
Pilot pump	1 gear pump
Maximum oil flow	29.3 L/min

HYDRAULIC MOTORS

Travel	2 variable displacement axial piston motors
Swing	1 axial piston motor

RELIEF VALVE SETTINGS

Implement circuit	31.9 MPa
Swing circuit	29.5 MPa
Travel circuit	31.9 Mpa
Power boost	34.3 Mpa
Pilot circuit	3.9 Mpa

UNDERCARRIAGE

Tracks

Heat-treated connecting pins with dirt seals Hydraulic (grease) track adjusters with shock-absorbing recoil springs.

Numbers of Rollers and Shoes on Each Side

Upper roller	2
Lower roller	8
Track shoes	48
Track guard	3

Travel Device

Each track driven by 2-speed axial piston motor.	
Parking brake is spring-set/hydraulic-released disc type.	
Travel speeds	High : 0 to 4.6 km/h Low : 0 to 3.0 km/h
Maximum traction force	273kN
Gradeability	70% (35 degree) continuous

UPPERSTRUCTUR

Swing Device

Axial piston motor with planetary reduction gear is bathed in oil. Swing circle is single-row. Swing parking brake is spring set/hydraulic-released disc type.	
Swing speed	10.1 min-1 (rpm)
Swing torque	110 kNm

SERVICE REFILL CAPACITIES

Fuel tank	560 ltr
Engine coolant	65.0 ltr
Engine oil	25.0 ltr
Swing device	16.3 ltr
Travel device (Each side)	9.0 ltr
Hydraulic system	298.0 ltr
Hydraulic oil tank	179.0 ltr

BUCKET AND ARM DIGGING FORCES

Bucket Digging force* ISO	22,100 kgf
Arm Crowd force* ISO	21,300 kgf

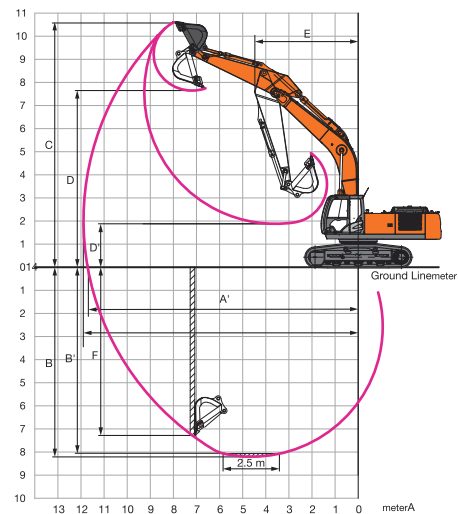
WEIGHTS AND GROUND PRESSURE

Track width	Operating weight	Ground pressure
600mm GP	33,800 kg	0.64 kgf/cm ²
600mm HD	34,500 kg	0.65 kgf/cm ²

BUCKETS

Capacity ISO Heaped m ³	Width (mm)		Tooth Points (no.s)	Weight (kg)	Max. Material density (kg/m ³)
	With out Side Cutter	With Side Cutter			
1.3	1300	1315	4	1580	2200
1.5	1376	-	5	1564	2000
1.7	1568	1623	5	1665	1800
2.0	1570	1660	5	1740	1600

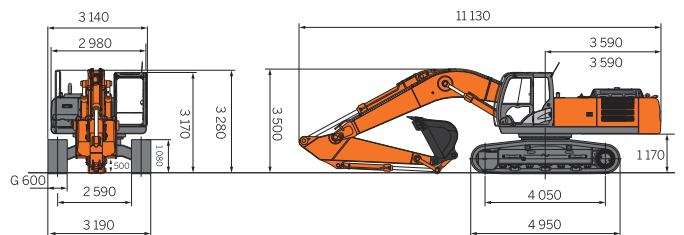
WORKING RANGES



	Boom (m)	6.2
	Arm (m)	2.3
A	Max. digging reach	10 119
A'	Max. digging reach (on ground)	9 898
B	Max. digging depth	6 353
B'	Max. digging depth (8' level)	6 150
C	Max. cutting height	9 534
D	Max. dumping height	6 650
D'	Min. dumping height	3 603
E	Min. swing radius	4 372
F	Max. vertical wall depth	4 505

All dimensions are in mm

DIMENSIONS



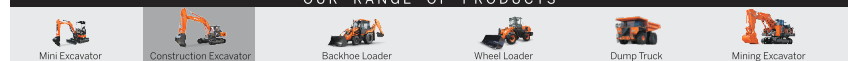
All dimensions are in mm

Tata Hitachi Construction Machinery Company Private Limited

Registered Office: Jubilee Building, 45 Museum Road, Bangalore, India 560025
Telephone: +9180 66953301 / 02 / 03 / 04 / 05 | Email: info@tatahitachi.co.in



OUR RANGE OF PRODUCTS



Authorised Dealer

These specifications are subject to change without prior notice. The machine depicted may vary from the actual machine. Please contact our nearest office for latest specifications. Accessories shown here are not part of the standard equipment. Performance of the machine may vary with site and operating conditions encountered.