



TATA HITACHI

Reliable solutions

EXPERIENCE THE POWER OF

EX200
INFRA
Super 
SERIES



Engine Power: 131 HP @ 2000 rpm

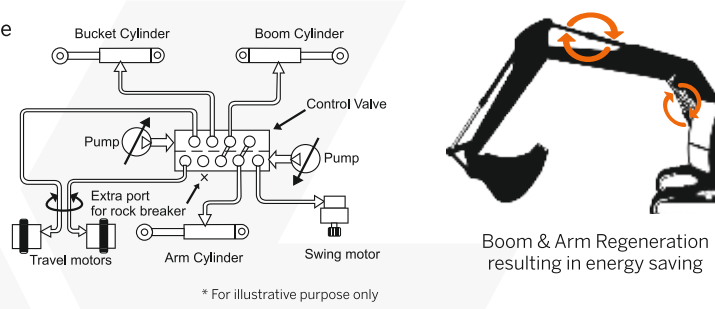
Operating Weight: 20,000 kg

Bucket Capacity: 0.86 - 1.5 m³

Superior Hydraulics

Powered by Hitachi's original Optimum Hydraulic System
Benefit: fast and smooth combined operations for higher performance

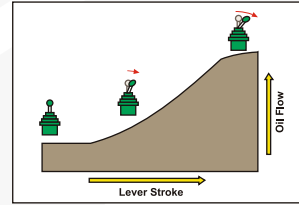
- Cross sensing summation system
- Fuel saving pump system
- Original pilot circuit
- Boom and Arm regeneration, holding valves
- Absolute type hydraulic filter
- Negative control (through control valve) variable displacement pump
- Improved pilot filter for protection of hydraulic system



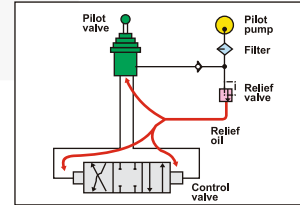
Reliable hydraulic aggregates



Absolute type return filter for improved hydraulic system against contamination



Oil flows in proportion to lever stroke. Load is minimum at neutral position saving fuel



Higher pressure circuit is actuated by a lower pressure pilot circuit reducing jerks on operator

Unparalleled Versatility

- EX200 Infra has an option of factory fitted rock breaker pipping kit
- The machine comes in tailor made options and is easily customizable with various attachments



- EX 200 Infra can be utilized in wide variety of applications



Power Optimization

- Powered by reliable & fuel efficient cummins 6BT5.9C engine
- Engine efficiency enhancement for lower fuel consumption
- Default EP mode – engine starts at EP mode for reduced fuel consumption & protecting engine
- Mode selection feature – EP mode & HP Mode
- Auto Idle & Auto Deceleration feature for lower fuel consumption
- Dial type throttle for precise engine speed control (Stepper Motor based regulation)
- 5% higher swing torque



Fuel efficient engine



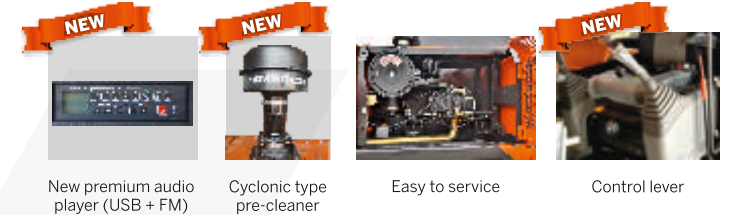
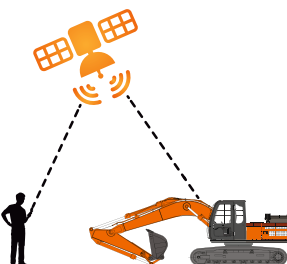
Dial type throttle

Efficiency Boosters

- Smoother pilot levers for improved operator comfort
- Heat insulation system for improved operator comfort inside the cabin
- Music system with Bluetooth connectivity and calling feature
- InSite: 4G telematics suit (Get insights into your job site)
- Cyclonic type air pre-cleaner for protecting the engine
- Heavy duty comfortable suspension seat with air lumbar support
- Ergonomic roomy cabin with standard AC
- Aluminium ROC for better cooling
- Improved reliable structures for uniform load distribution
- Improved swing bearing
- Bolt type toolbox



Ergonomically designed spacious cabin with comfortable suspension seat and air lumbar support



Return on Investment

- Most durable & reliable structures
- Highest resale value
- Best in class fuel efficiency
- Lower operating cost
- Wide spread dealer network for easy availability of spare parts
- Filed diagnostic vehicle for quicker after sales support
- Peace of mind through extended warranty
- Extended service intervals for reduced maintenance cost:
 - Hydraulic oil change – 4500 hours
 - Hydraulic filter change – 1500 hours
 - Engine oil change – 500 hours
 - Travel device oil change – 2000 hours

| | |
|--|---|
| <p>4500 Hrs Hydraulic oil change interval</p> | <p>Default EP Mode resulting in fuel saving</p> |
| <p>1500 Hrs Hydraulic filter change interval</p> | <p>EXTENDED WARRANTY COMPLETE PEACE OF MIND</p> <p>For complete peace of mind</p> |

SPECIFICATIONS

ENGINE

| | |
|-----------------------------|---------------------------------|
| Model | Cummins 6BT5.9C |
| Type | 6 cylinder in-line water cooled |
| Rated fly wheel power | 131 HP (133 PS) @ 2000 rpm |
| Max.torque..... | 54.8 kgf-m @ 1300 rpm |
| Batteries | 2x12V |

HYDRAULIC SYSTEM

| | |
|------------------|---|
| Main pumps | 2 variable displacements axial piston pumps |
| Flow rate | 2x221 L/min |
| Pilot pump..... | 1 gear pump |
| Flow rate..... | 20 L/min |

SUPERSTRUCTURE

| | |
|------------------|----------|
| Swing Speed..... | 13.7 rpm |
|------------------|----------|

RELIEF VALVE SETTINGS

| | |
|-------------------------|-------------------------|
| Implement circuit | 285 kgf/cm ² |
| Swing circuit..... | 275 kgf/cm ² |
| Travel circuit..... | 350 kgf/cm ² |
| Pilot circuit..... | 40 kgf/cm ² |

UNDERCARRIAGE

| | |
|----------------------------|----------------------|
| Travel Speed..... | 0-4.2 kmph |
| Max. traction force | 15,200 kgf |
| Gradeability | 35° (70% continuous) |
| No. of upper rollers..... | 2 |
| No. of lowers rollers..... | 7 |
| No. of track shoes | 49 |
| Shoe width | 500 mm |

SERVICE REFILL CAPACITIES

| | |
|---------------------------------|----------|
| Hydraulic tank | 129 ltr |
| Hydraulic system | 220 ltr |
| Fuel tank | 300 ltr |
| Engine coolant..... | 25.0 ltr |
| Engine oil (Sump)..... | 22.0 ltr |
| Swing device | 6.7 ltr |
| Travel device (Each side) | 6.8 ltr |

WEIGHTS AND GROUND PRESSURE

| Machine | Operating weight | Ground pressure |
|---------------|------------------|--------------------------|
| EX200 Backhoe | 20,000 kg | 0.55 kgf/cm ² |

DIGGING FORCES

Bucket digging force*..... 12,250 kgf

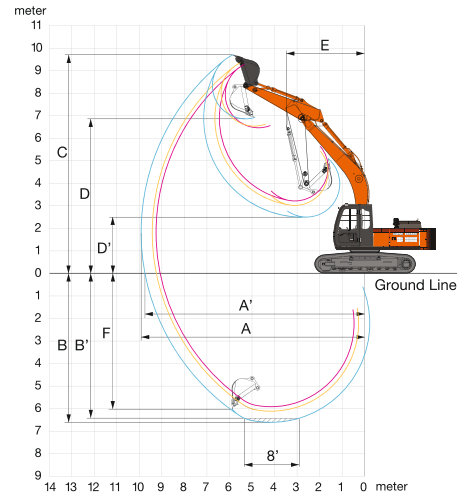
| | |
|---------------------|------------|
| Arm length | 2.20 m |
| Arm crowding force* | 11,700 kgf |

*As per ISO standards

BUCKETS

| Capacity | Weight (kg) | Width (mm) | | No. of Tooth Points | Max material Density (kg.m ³) | Arm (m) |
|--------------|-------------|----------------------|-------------------|---------------------|---|---------|
| | | Without Side Cutters | With Side Cutters | | | |
| 0.91 GP | 754 | 1150 | 1260 | 5 | 1800 | 2.2 |
| 0.86 HD | 905 | 1042 | - | 4 | 2000 | 2.2 |
| 1.0 SAND/ELM | 768 | 1279 | 1366 | 5 | 1500 | 2.2 |
| 1.5 COKE | 738 | 1802 | - | - | 1150 | 2.2 |
| 1.5 COKE | 738 | 1802 | - | - | 900 | 2.9 |

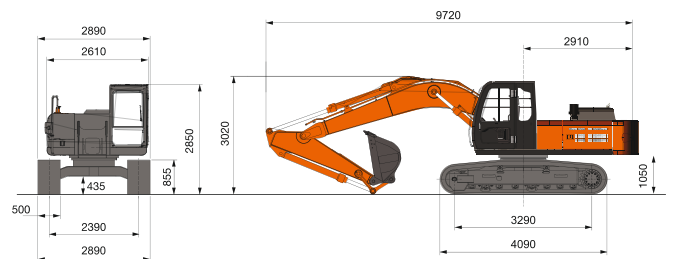
BACKHOE ATTACHMENT



| | Boom length | 5680 | |
|----|--------------------------------|------|------|
| | Armlength | 2200 | 2900 |
| A | Max. digging reach | 9250 | 9910 |
| A' | Max. digging reach (on ground) | 9060 | 9740 |
| B | Max. digging depth | 5910 | 6600 |
| B' | Max. digging depth (8' level) | 5670 | 6420 |
| C | Max. cutting height | 8990 | 9400 |
| D | Max. dumping height | 6230 | 6610 |
| E | Min. swing radius | 3720 | 3660 |
| F | Max. vertical wall depth | 5050 | 5980 |

All dimensions are in mm

DIMENSIONS



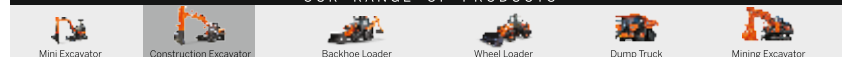
All dimensions are in mm

Tata Hitachi Construction Machinery Company Private Limited

Registered Office: Jubilee Building, 45 Museum Road, Bangalore, India 560025
Telephone: +9180 66953301 / 02 / 03 / 04 / 05 | Email: info@tatahitachi.co.in



OUR RANGE OF PRODUCTS



Authorised Dealer

These specifications are subject to change without prior notice. The machine depicted may vary from the actual machine. Please contact our nearest office for latest specifications. Accessories shown here are not part of the standard equipment. Performance of the machine may vary with site and operating conditions encountered.