

EXPERIENCE THE POWER OF

NEW
EX210
INFRA
SUPER 
SERIES



Engine Power: 131 HP @ 2000 rpm

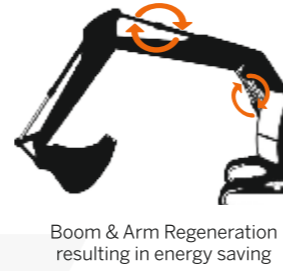
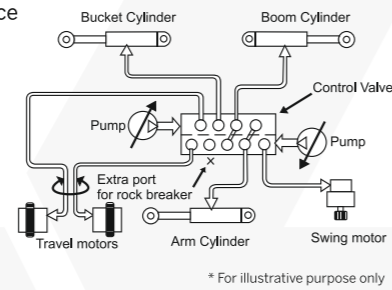
Operating Weight: 20,300 kg

Bucket Capacity: 0.86 - 1.5 m³

Superior Hydraulics

Powered by Hitachi's original Optimum Hydraulic System
Benefit: fast and smooth combined operations for higher performance

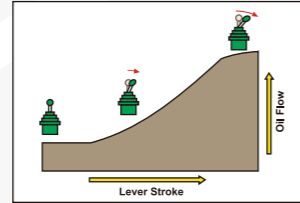
- Cross sensing summation system
- Fuel saving pump system
- Original pilot circuit
- Boom and Arm regeneration, holding valves
- Absolute type hydraulic filter
- Negative control (through control valve) variable displacement pump
- Improved pilot filter for protection of hydraulic system



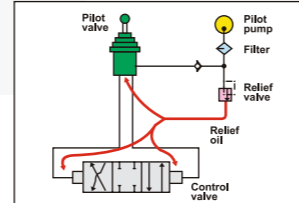
Reliable hydraulic aggregates



Absolute type return filter for improved hydraulic system against contamination



Oil flows in proportion to lever stroke. Load is minimum at neutral position saving fuel



Higher pressure circuit is actuated by a lower pressure pilot circuit reducing jerks on operator

Unparalleled Versatility

- EX210 Infra has an option of factory fitted rock breaker pipping kit
- The machine comes in tailor made options and is easily customizable with various attachments :



- EX210 Infra can be utilized in wide variety of applications



Power Optimization

- Powered by reliable & fuel efficient cummins 6BT5.9C engine
- Engine efficiency enhancement for lower fuel consumption
- Default EP mode – engine starts at EP mode for reduced fuel consumption & protecting engine
- Mode selection feature – EP mode & HP Mode
- Auto Idle & Auto Deceleration feature for lower fuel consumption
- Dial type throttle for precise engine speed control (Stepper Motor based regulation)
- 5% higher swing torque **NEW**



Fuel efficient engine



Dial type throttle

Efficiency Boosters

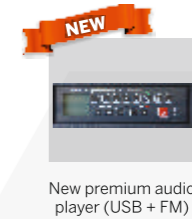
- Smoother pilot levers for improved operator comfort **NEW**
- Heat insulation system for improved operator comfort inside the cabin
- Music system with Bluetooth connectivity and calling feature **NEW**
- InSite: 4G telematics suit (Get insights into your job site) **NEW**
- Cyclonic type air pre-cleaner for protecting the engine **NEW**
- Heavy duty comfortable suspension seat with air lumbar support **NEW**
- Ergonomic roomy cabin with standard AC
- Aluminium ROC for better cooling **NEW**
- Improved reliable structures for uniform load distribution
- Improved swing bearing **NEW**
- Bolt type toolbox **NEW**



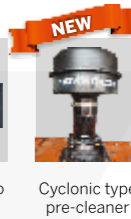
Ergonomically designed spacious cabin with comfortable suspension seat and air lumbar support



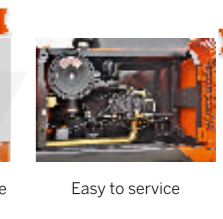
inSite
INSIGHTS INTO YOUR JOB SITE



New premium audio player (USB + FM)



Cyclonic type pre-cleaner



Easy to service



Control lever

Return on Investment

- Most durable & reliable structures
- Highest resale value
- Best in class fuel efficiency
- Lower operating cost
- Wide spread dealer network for easy availability of spare parts
- Filed diagnostic vehicle for quicker after sales support
- Peace of mind through extended warranty
- Extended service intervals for reduced maintenance cost:
 - Hydraulic oil change – 4500 hours
 - Hydraulic filter change – 1500 hours
 - Engine oil change – 500 hours **NEW**
 - Travel device oil change – 2000 hours **NEW**



4500 Hrs Hydraulic oil change interval



Default EP Mode resulting in fuel saving



1500 Hrs Hydraulic filter change interval



For complete peace of mind

SPECIFICATIONS

ENGINE

Model	Cummins 6BT5.9C
Type	6 cylinder in-line water cooled
Rated fly wheel power	131 HP (133 PS) @ 2000 rpm
Max.torque.....	54.8 kgf-m @ 1300 rpm
Batteries	2x12V

HYDRAULIC SYSTEM

Main pumps	2 variable displacements axial piston pumps
Flow rate	2x221 L/min
Pilot pump.....	1 gear pump
Flow rate.....	20 L/min

SUPERSTRUCTURE

Swing Speed.....	13.7 rpm
------------------	----------

RELIEF VALVE SETTINGS

Implement circuit	285 kgf/cm ²
Swing circuit.....	275 kgf/cm ²
Travel circuit.....	350 kgf/cm ²
Pilot circuit.....	40 kgf/cm ²

UNDERCARRIAGE

Travel Speed.....	0-4.2 kmph
Max. traction force	15,200 kgf
Gradeability	35° (70% continuous)
No. of upper rollers.....	2
No. of lowers rollers.....	7
No. of track shoes	49
Shoe width	600 mm

SERVICE REFILL CAPACITIES

Hydraulic tank	129 ltr
Hydraulic system	220 ltr
Fuel tank	300 ltr
Engine coolant.....	25.0 ltr
Engine oil (Sump).....	22.0 ltr
Swing device	6.7 ltr
Travel device (Each side)	6.8 ltr

WEIGHTS AND GROUND PRESSURE

Machine	Operating weight	Ground pressure
EX210 Backhoe	20,300 kg	0.47 kgf/cm ²

DIGGING FORCES

Bucket digging force*..... 12,250 kgf

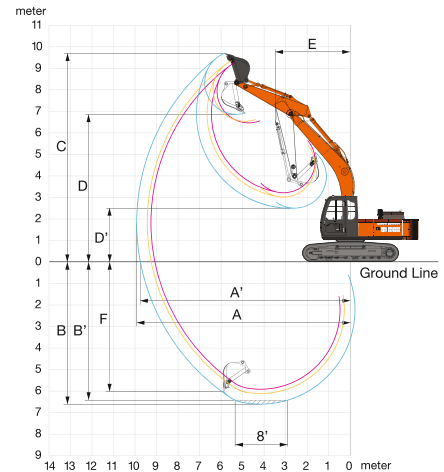
Arm length	2.20 m
Arm crowding force*	11,700 kgf

*As per ISO standards

BUCKETS

Capacity	Weight (kg)	Width (mm)		No. of Tooth Points	Max material Density (kg.m ³)	Arm (m)
		Without Side Cutters	With Side Cutters			
0.91 GP	754	1150	1260	5	1800	2.2
0.86 HD	905	1042	-	4	2000	2.2
1.0 SAND/ELM	768	1279	1366	5	1500	2.2
1.5 COKE	738	1802	-	-	1150	2.2
1.5 COKE	738	1802	-	-	900	2.9

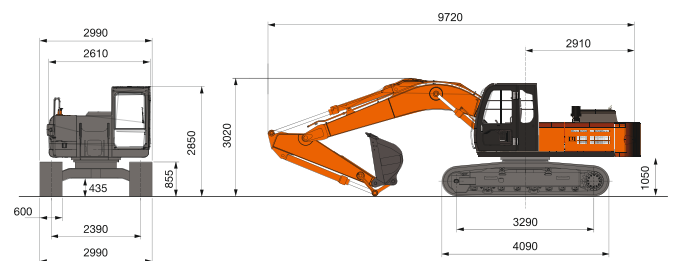
BACKHOE ATTACHMENT



Boom length		5680	
Armlength		2200	2900
A	Max. digging reach	9250	9910
A'	Max. digging reach (on ground)	9060	9740
B	Max. digging depth	5910	6600
B'	Max. digging depth (8' level)	5670	6420
C	Max. cutting height	8990	9400
D	Max. dumping height	6230	6610
E	Min. swing radius	3720	3660
F	Max. vertical wall depth	5050	5980

All dimensions are in mm

DIMENSIONS



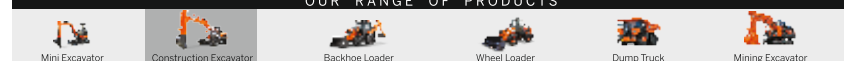
All dimensions are in mm

Tata Hitachi Construction Machinery Company Private Limited

Registered Office: Jubilee Building, 45 Museum Road, Bangalore, India 560025
Telephone: +9180 66953301 / 02/03/04/05 | Email: info@tatahitachi.co.in



OUR RANGE OF PRODUCTS



Authorised Dealer

These specifications are subject to change without prior notice. The machine depicted may vary from the actual machine. Please contact our nearest office for latest specifications. Accessories shown here are not part of the standard equipment. Performance of the machine may vary with site and operating conditions encountered.