

SPECIFICATIONS

ENGINE

Model	Yanmar 3TNV88-BSTA
Type	Water cooled, 3-cylinder diesel engine, direct injection
Engine Power (Gross) (ISO14396:2002)	20.4 kW @ 2200 rpm
Total displacement	1642 L
Max torque	106 Nm @ 1200 rpm
Battery	12 V

HYDRAULIC SYSTEM

Main pumps	3
Maximum oil flow(Main Pumps)	68 LPM
Pilot pump	1 gear pump
Maximum oil flow	8.8 LPM

RELIEF VALVE SETTINGS

Implement circuit	175 kgf/cm ²
Swing circuit	145 kgf/cm ²
Travel circuit	175 kgf/cm ²
Pilot circuit	25 kgf/cm ²

UNDERCARRIAGE

Travel Speed - High Mode	3.2 kmph
Travel Speed - Low Mode	1.6 kmph
Max Traction force	2990 kgf
Gradeability	58 % (30°)
No. of upper Roller (Each Side)	1
No. of lower Roller (Each Side)	3
No. of Track shoe (Each Side)	40
Shoe width	280 mm

SWING SYSTEM

Swing Speed	10.5 rpm
Swing torque	4470 Nm
Boom Swing left	50°
Boom Swing Right	80°

SERVICE REFILL CAPACITY

Fuel tank	32 L
Hydraulic system	67 L
Hydraulic oil	42 L
Travel device (Each side)	0.8 L
Engine oil	6.7 L
Engine coolant	3.5 L

DIGGING FORCES

Bucket Digging Forces (ISO 6015 : 2006)	2325 kgf
Arm Crowding Forces (ISO 6015 : 2006)	1655 kgf

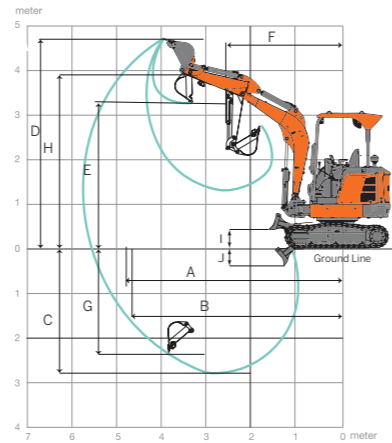
BUCKETS

Capacity (ISO 7451 : 2007 heaped)	Width		Weight	No. of tooth points
	With side cutter	Without side cutter		
0.07 m ³	544 mm	514 mm	61 kg	4
*0.07 m ³	621 mm	595 mm	65 kg	4
0.04 m ³	364 mm	334 mm	45 kg	3

Note: Suitable for materials with density of 1600kg/m³ or less
*Wide bucket

WORKING DIMENSION

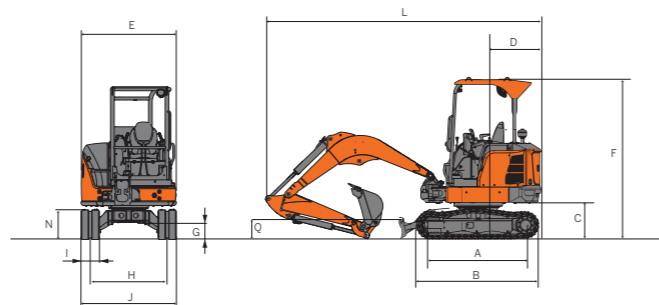
NOTE: THE DIAGRAM AND MACHINE FIGURE USED HERE IS FOR REPRESENTATIONAL PURPOSE ONLY.



A	Maximum digging reach	4.454
B	Maximum digging reach on ground	4.325
C	Maximum digging depth – dozer up	2.575
D	Maximum digging height	3.930
E	Maximum dump height	2.715
F	Minimum front swing radius (no offset)	1.936
G	Maximum vertical wallcut depth	1.624
H	Maximum height to dipper nose	3.388
Dozer		
I	Max height (Above ground)	341
J	Digging Depth (Below ground)	332

*All dimensions are in mm

DIMENSION



Arm length	1,070	
Boom length	2,170	
A	Sprocket idler centres	1,490
B	Undercarriage overall length	1,926
C	Kingpost clearance	574
D	Tailswing radius	980
E	Overall width of superstructure	1,457
F	Height over cab	2,527
G	Ground clearance	268
H	Track gauge	1,220
I	Track width	280
J	Width over tracks	1,500
N	Track height	495
L	Transport length	4,193
Q	Blade height	336
	Blade width	1,500

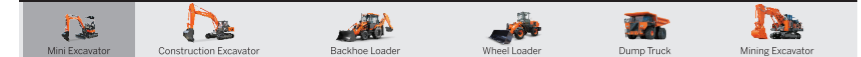
*All dimensions are in mm

Tata Hitachi Construction Machinery Company Private Limited

Registered Office: Jubilee Building, 45 Museum Road, Bangalore, India 560025
Telephone: +9180 66953301 / 02 / 03 / 04 / 05 | Email: info@tatahitachi.co.in



OUR RANGE OF PRODUCTS



Authorised Dealer

These specifications are subject to change without prior notice. The machine depicted may vary from the actual machine. Please contact our nearest office for latest specifications. Accessories shown here are not part of the standard equipment. Performance of the machine may vary with site and operating conditions encountered.

THCM/NX30/E/8P/DEC2024

STEP AHEAD >>>

NX30
NEXTGEN
SERIES



Engine Power : 27.4 HP @ 2200 rpm | Operating Weight : 2900 kg | Bucket Capacity : 0.04 m³-0.07 m³

NEXTGEN SERIES

The all new Tata Hitachi **NX Series of hydraulic excavators** marks the dawn of the new generation of excavators. One that meets the expectations of customers of next generation – be it performance, reliability, comfort, versatility, maintainability or savings.

The NX30 is the first in the series that packs a punch in its mini frame. With stunning signature looks that add a distinct touch to this new series, NX30 upholds the class and stature of products from Tata Hitachi, the pioneers of mini excavators in India.

Step Ahead in your business with Tata Hitachi's Next Gen Excavators



STEP AHEAD WITH NEXT GEN PERFORMANCE

NX30, combination of power, fuel efficiency and productivity is powered by a next generation Yanmar engine that churns out a class leading power of 27.4HP. This power is channelised through our latest Next Gen Operating System (NGOS) which is an intelligent load adaptive hydraulic flow control system to deliver next gen performance.



The Next Gen Hydraulics is powered by the all new Quadra Flow Hydraulic System, a unique (patent registered) 4 pump system. This delivers variable displacements to match the load and speed requirements of various applications. NGOS is very simple and easy to maintain which delivers :

- 100% pilot controlled operations
- Independent speed operations
- Faster attachment speeds
- Smoother combined operations
- Least fuel consumption at peak performance



Pump



Engine

STEP AHEAD WITH NEXT GEN DEPENDABILITY

Built to last

Quality components tested and validated to Hitachi's global standards makes this machine highly reliable delivering maximum uptime for customers.

A tough complete sheet metal body provides excellent wear resistance & shields all vital components. It also gives the machine good stability & durability.

This machine has heavy duty undercarriage comprising of HD track frame, HD track chain with bolted shoes, durable rollers. All these give the machine a sturdy base to perform in demanding applications.



Undercarriage



Control Valve

STEP AHEAD WITH NEXT GEN VERSATILITY

Designed and developed to work in harmony with a wide range of attachments, make this machine a highly versatile one.

- The machine comes in tailor made options and is easily customizable with various attachments.
- Factory fitted rock breaker piping is available as an option.



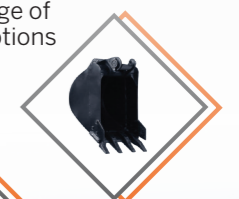
Rock Breaker



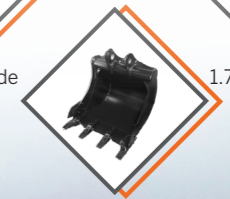
Auger



1.0 ft. wide



1.75 ft. wide



2 ft. wide

Wide range of bucket options



STEP AHEAD
WITH ULTIMATE PERFORMANCE AND ADVANCED FEATURES



- Sturdy front attachment**
- Heavy duty boom
 - Heavy duty arm
 - Cylinder guard for boom cylinder



- Durable & reinforced Buckets**
- Wide range of buckets available
 - 2.0 ft. wide
 - 1.75 ft. wide
 - 1.0 ft. wide



- Features**
- Tool box available on the RHS
 - Magic eye
 - All sheet metal body
 - IP67 electrical connector for protection from dust and water spillage



- Easy & simple to maintain**
- Vertical lifting engine hood
 - Long drain hydraulic oil - 4000 hours
 - Low fuel level warning on display
 - Fuel level display on dashboard
 - Cyclonic pre-cleaner



- Rugged undercarriage**
- Heavy duty track chain with bolted shoes
 - Track guard to guide track chain
 - Reliable travel device
 - Protected Dozer cylinder
 - Dozer blade positioned for maximum reach



- Ergonomically designed canopy**
- 4 pillar canopy
 - LED lamps
 - Heat resistant roof liner
 - Fan for operator comfort



- Reliable and powerful Japanese engine**
- High engine power of 27.4 HP



- NGOS Hydraulics**
- Faster attachment speeds
 - Smoother combined operations
 - Least fuel consumption



- Spacious and comfortable workstation**
- Ergonomically placed controls
 - Fully pilot controlled operations
 - Smooth pilot levers
 - Comfortable seat



- Swing bearing**
- Internal type gear
 - Highest swing speed in its class - 10.5 rpm



» **STEP AHEAD**
WITH NEXT GEN COMFORT

Packed with Next Gen features this design maximizes operator productivity and minimizes fatigue. Excellent all-round visibility, comfortable suspension seat and ergonomic controls, ensure best-in-class operator comfort.

- Canopy with insulated roof liner for minimizing heat in work station
- LED lamps
- Fully Pilot controlled operations
- 12V electric socket
- Weight adjustable suspension seat with 8 options;
- Intuitive fingertip controls
- Smooth pilot levers
- Wrist rest, seat belt, fan, USB charging port



» **STEP AHEAD**
WITH NEXT GEN SUPPORT & MAINTENANCE

Tata Hitachi's extended warranty, Genuine Spare Parts, along with strategically located warehouses and Field Diagnostic Vehicles provide quicker after-sales support. Our extensive dealership network and trained engineers support and carry out all the maintenance activities thereby providing complete peace of mind to the customers.



4000 hours hydraulic oil change interval



Simplified maintenance



Mobile Workshop



Field Diagnostic Vehicle



*Based on testing done in controlled and standard environment. Terms and condition apply

» **STEP AHEAD**
WITH HIGHER SAVINGS



Least Fuel Consumption

- NGOS - Next gen operating system
- Quadra flow hydraulic system



Lowest Maintenance Cost

- Quality and reliable aggregates
- Long drain hydraulic oil- 4000 hours
- Engine oil change interval- 500 hours
- Air pre cleaner for long life of engine



Ease of Transport

Easily transportable on a small carrier/pick up vehicle

- Overall transport length - 4193 mm
- Overall width - 1500 mm

